

Лицензии открытого контента

Ирина Кучма,

Менеджер программы Открытый доступ, eIFL.net

Презентация на семинаре ОТКРЫТЫЙ ДОСТУП и WEB 2.0:
УЛУЧШАЯ НАУЧНУЮ КОММУНИКАЦИЮ , 3 августа 2008,
Американский Университет в Центральной Азии, Библиотека

- Должна быть разработана в организации
- Разговаривая с авторами, говорите о том, что можно сделать, а не то, что нельзя

Лицензия для депонирования в репозитории

- Подписывает автор, депонирующий работу в репозитории
- Передает репозиторию определенные права
- Помогает не нарушить авторское право
- Устанавливает формальные взаимоотношения между автором, репозитарием и конечными пользователями

Лицензия для депонирования в репозитории

- Четко информирует автора о цели репозитария, описывает, что репозитарий может делать с работой
- Описывает права и обязанности автора, репозитария и конечных пользователей
- Дистрибуционное соглашение автора и конечных пользователей, прилагая лицензии Creative Commons
- Или дистрибуционное соглашение репозитария и конечных пользователей
- Зачем все это?



**PRIVATE
PROPERTY
NO TRESPASSING**

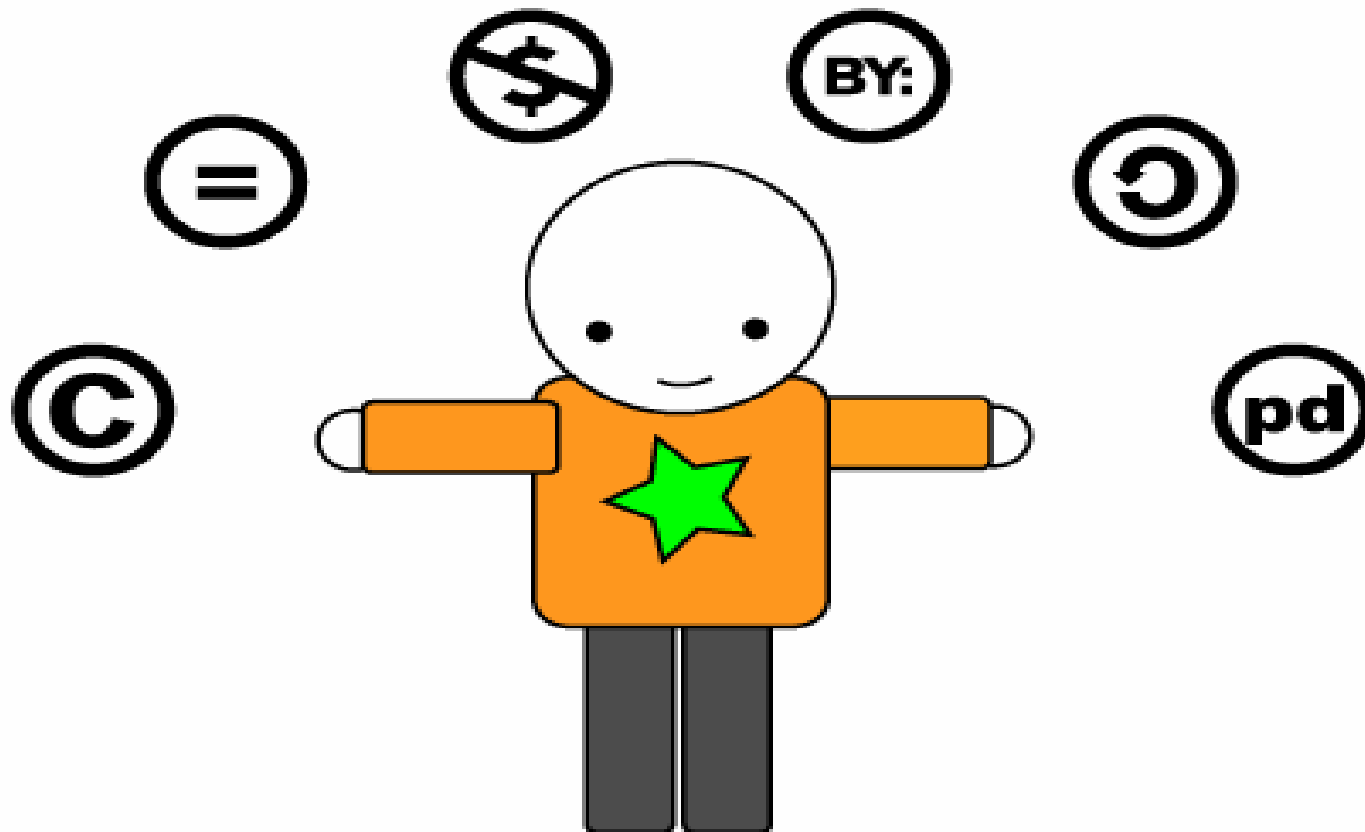


ВОЗМОЖНОСТИ



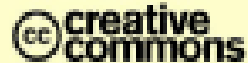
Creative Commons

CREATIVE COMMONS WANTS TO HELP DEFINE THE SPECTRUM OF POSSIBILITIES BETWEEN FULL COPYRIGHT -- ALL RIGHTS RESERVED -- AND THE PUBLIC DOMAIN -- NO RIGHTS RESERVED. OUR LICENSES HELP YOU RETAIN YOUR COPYRIGHT WHILE ALLOWING CERTAIN USES OF YOUR WORK. THEY HELP YOU OFFER YOUR CREATIVE WORK WITH SOME RIGHTS RESERVED.



ANITA GOT A LICENSE EXPRESSED IN THREE WAYS: 1) COMMONS DEED, 2) LEGAL CODE, 3) DIGITAL CODE.

Human-Readable Commons Deed



COMMONS DEED

Attribution-NonCommercial-ShareAlike 4.0

Key License Terms:



Attribution. The licensee permits others to copy, distribute, display, and perform the work, in return, licensees must give the original author credit.



Noncommercial. The licensee permits others to copy, distribute, display, and perform the work, in return, licensees may not use the work for commercial purposes -- unless they get the licensee's permission.

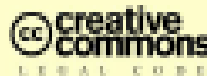


Share alike. The licensee permits others to distribute derivative works under a license identical to the one that governs the licensor's work.

Whenever you associate the Commons Deed with your copyrighted work, licensees have the work to you in the terms of the Creative Commons license found here.

<https://creativecommons.org/licenses/by-nc-sa/4.0/>

Lawyer-Readable Legal Code



Attribution-NonCommercial-ShareAlike 4.0

CREATIVE COMMONS CORPORATION IS NOT A LAW FIRM AND DOES NOT PROVIDE LEGAL SERVICES. DISTRIBUTION OF THIS COMMONS DEED DOES NOT CREATE AN ATTORNEY-CLIENT RELATIONSHIP. CREATIVE COMMONS PROVIDES THIS INFORMATION ON AN "AS-IS" BASIS. CREATIVE COMMONS MAKES NO WARRANTIES REGARDING THE INFORMATION PROVIDED, AND DISCLAIMS LIABILITY FOR DAMAGES RESULTING FROM ITS USE.

WORK

THE WORK (AS DEFINED BELOW) IS PROVIDED UNDER THE TERMS OF THIS CREATIVE COMMONS PUBLIC LICENSE ("CC BY-NC-SA LICENSE"). THE WORK IS PROTECTED BY COPYRIGHT AND/OR OTHER APPLICABLE LAW. ANY USE OF THE WORK OTHER THAN AS AUTHORIZED UNDER THIS LICENSE IS PROHIBITED.

BY EXERCISING ANY RIGHTS TO THE WORK PROVIDED HERE, YOU ACCEPT AND AGREE TO BE BOUND BY THE TERMS OF THIS LICENSE. FOR LICENSOR'S PROTECTION, YOU MAY ELECT TO ACCEPT THIS LICENSE ONLY BY ONLINE OR OTHER MEANS OF ELECTRONIC ACCEPTANCE OF SUCH TERMS AND CONDITIONS.

1. Definitions

- "Adapted Work"** means a work, such as a translation, abridgment, or derivative, in which the work is in the public domain or uncopyrighted, along with a number of other adaptations, modifications, and subsequent works in themselves not considered derivative works. A work that constitutes a derivative work will not be considered a derivative work for purposes of this license.
- "Derivative Work"** means a work based upon the work or upon the work and other pre-existing works, such as a translation, music arrangement, dramatization, film adaptation, revision, update, correction, or other modification, or any other work in which the work may be recast, transformed, or adapted, except that copies that constitute a Creative Commons work will not be considered a derivative work for purposes of this license.
- "License"** means the intellectual or artistic right that allows the work under the terms of this license.

Machine-Readable Digital Code

```
cc Creative Commons License 4.0
by Attribution-NonCommercial-ShareAlike 4.0
nc Non-Commercial
sa Share-Alike
https://creativecommons.org/licenses/by-nc-sa/4.0/
```

```
cc
by Attribution-NonCommercial-ShareAlike 4.0
nc Non-Commercial
sa Share-Alike
https://creativecommons.org/licenses/by-nc-sa/4.0/
```

```
License 4.0
https://creativecommons.org/licenses/by-nc-sa/4.0/
by Attribution-NonCommercial-ShareAlike 4.0
nc Non-Commercial
sa Share-Alike
https://creativecommons.org/licenses/by-nc-sa/4.0/
```

cc BY-NC-SA

4.0

Cool! I can understand the Commons Deed, lawyers can understand the legal code, and computers can identify my work by reading the digital code!



Creative Commons

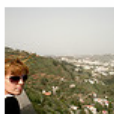
Many Flickr users have chosen to offer their work under a Creative Commons license, and you can browse or search through content under each type of license.

Here are some recently added bits and pieces:

Attribution License



From [strato56](#)



From [jonavcp](#)



From [jonavcp](#)



From [jonavcp](#)



From [strato56](#)

» 7,421,023 photos ([See more](#))

Attribution-NoDerivs License



From [greaterfalls](#)



From [Alison](#)
[Narro](#) :)



From [_hsu](#)



From [_hsu](#)



From [_hsu](#)

» 2,568,822 photos ([See more](#))

Attribution-NonCommercial-NoDerivs License



"Creative Commons is a non-profit that offers an alternative to full copyright."

creativecommons.org

Briefly...

Attribution means:

You let others copy, distribute, display, and perform your copyrighted work - and derivative works based upon it - but only if they give you credit.



Noncommercial means:

You let others copy, distribute, display, and perform your work - and derivative works based upon it - but for noncommercial purposes only.



No Derivative Works means:

You let others copy, distribute, display, and perform only verbatim copies of your work, not derivative works based upon it.



Share Alike means:

[photostream](#)

BY: Attribution-NonCommercial License



From [limbik](#)



From [peiflickr](#)



From [peiflickr](#)



From [Wandering Photo...](#)



From [timojazz](#)

» 9,172,431 photos ([See more](#))

BY: Attribution-NonCommercial-ShareAlike License



From [Cherie Priest](#)



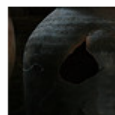
From [Cherie Priest](#)



From [kunchia](#)



From [mike dialect](#)



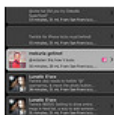
From [kunchia](#)

» 18,470,705 photos ([See more](#))

BY: Attribution-ShareAlike License



From [Roadgeek Adam](#)



From [NickStarr](#)



From [zolta_oe](#)



From [Lucius Kwok](#)



From [arne.list](#)

» 5,258,312 photos ([See more](#))

You [Sign in](#) | [Create Your Free Account](#)

Explore [Places](#) | [Last 7 Days](#) | [This Month](#) | [Popular Tags](#) | [Creative Commons](#) | [Search](#)

[Send to a friend](#)
[Save to del.icio.us](#)



Search
CC Licensed Work



License
Your Work

Home

About

Support

Projects

Participate

International

Contact



A seal marking CC licenses that qualify as Free Culture Licenses according to the Definition of Free Cultural Works.



planet
creative commons

Aggregating blogs from Creative Commons, CC jurisdiction projects, and the CC community.

Share, Remix, Reuse – Legally

Creative Commons provides free tools that let authors, scientists, artists, and educators easily mark their creative work with the freedoms they want it to carry. You can use CC to change your copyright terms from "All Rights Reserved" to "Some Rights Reserved."

We're a nonprofit organization. Everything we do – including the software we create – is free.

[Learn More](#)

[FAQ](#)

International

Select a jurisdiction

[More information](#)

Search

Search

FAQ

[Opportunities](#)

[Press Kit](#)

Commoners

[Audio](#)

[Video](#)

[Images](#)

[Text](#)

[Education](#)

[Software](#)

The Commons

[Science Commons](#)

[ccInternational](#)

[ccLearn](#)

CC News

Jurisdiction News



Creative Commons ...

eIFL

Microsoft PowerPoi...

EN



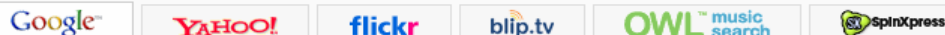
23:54



Enter search query go

- Search for works I can use for commercial purposes.
- Search for works I can modify, adapt, or build upon.

[What is this?](#) [Content Directories](#) [Remove Frame](#)



Search
CC Licensed Work



License
Your Work

[Home](#) [About](#) [Support](#) [Projects](#) [Participate](#) [International](#) [Contact](#)

License Your Work

choose license

With a Creative Commons license, **you keep your copyright** but allow people to **copy and distribute your work** provided they **give you credit** — and only on the conditions you specify here. For those new to Creative Commons licensing, we've prepared a **list of things to think about**. If you want to offer your work with no conditions, choose the **public domain**.

Allow commercial uses of your work?

- Yes ([more info](#))
- No ([more info](#))

What You Can Do Here

Creative Commons helps you publish your work online while letting others know exactly what they can and can't do with your work. When you choose a license, we provide you with tools and tutorials that let you add license information to your own site, or to one of several free hosting services that have incorporated

International
Select a jurisdiction
[More information](#)

Search

- [FAQ](#)
- [Opportunities](#)
- [Presskit](#)
- [Commoners](#)
- [Audio](#)
- [Video](#)
- [Images](#)
- [Text](#)

Гарвард

In legal terms, the permission granted by each Faculty member is a nonexclusive, irrevocable, paid-up, worldwide license to exercise any and all rights under copyright relating to each of his or her scholarly articles, in any medium, and to authorize others to do the same, provided that the articles are not sold for a profit

Harvard

- The policy will apply to all scholarly articles written while the person is a member of the Faculty except for any articles completed before the adoption of this policy and any articles for which the Faculty member entered into an incompatible licensing or assignment agreement before the adoption of this policy. The Dean or the Dean's designate will waive application of the policy for a particular article upon written request by a Faculty member explaining the need...

Harvard

- The Faculty of Arts and Sciences of Harvard University is committed to disseminating the fruits of its research and scholarship as widely as possible.
- In keeping with that commitment, the Faculty adopts the following policy: Each Faculty member grants to the President and Fellows of Harvard College permission to make available his or her scholarly articles and to exercise the copyright in those articles.

Спасибо!
Вопросы?

Ирина Кучма
iryna.kuchma [at] eifl.net
www.eifl.net